

People's Electric Co-operative, Inc.

Facilities Study

Interconnection Request:

Rail Creek Project

ERAS-2025-022

Group 4

123 MW Battery Storage

Pontotoc County, OK

Version 1

Issued April 13th, 2026



**Prepared by
Toth and Associates, Inc.**

Table of Contents

Introduction	3
Estimated Cost and Schedule.....	3
Proposed Plan of Service	5
Conclusion.....	6

Introduction

The Southwest Power Pool (SPP) has requested an Interconnection Facilities Study (IFS) be performed per the Generator Interconnection Procedures (GIP) in accordance with the scope of IFS Section 8.10 and the procedures of Section 8.11 for the proposed 123 MW battery storage system (Project) to the People’s Electric Co-operative (PEC) transmission system.

This IFS determines cost estimates and lead times of equipment, engineering, procurement and construction for the Project point of interconnection (POI) at the Monte Vista 138 kV Switchyard with a requested in-service date of 12/31/2027.

Study Scope

The following Non-shared Network Upgrades (Non-shared NU) and Transmission Owner Interconnection Facilities (TOIF) upgrades have been identified related to the Project and are shown in **Table 1** below.

Upgrade Type	Upgrade Name	UID	Lead Time	ERAS Cost Estimate
Interconnection	Monte Vista 138 kV Switchyard ERAS-2025-022 Interconnection (TOIF) (PEC)	170782	14 months	\$2,573,308.00
Interconnection	Monte Vista 138 kV Switchyard ERAS-2025-022 Interconnection (Non-shared NU) (PEC)	170783	22 months	\$1,165,190.00

Table 1: Interconnection Upgrades

Estimated Cost and Schedule

Monte Vista 138 kV Substation & Transmission Lead Line (TOIF) UID 170782

TOIF upgrades required to accommodate the interconnection of the Project at the Monte Vista 138 kV Switchyard include constructing a new dead-end structure, moving an existing 138 kV transmission line to the new dead-end structure, and constructing a new 138 kV transmission line approximately 0.75 miles to the Project Point of Change of Ownership (POCO).

Estimated Costs:

Monte Vista Substation

Design Costs	\$	20,000
Construction Costs	\$	482,278
T-Line Move Design Costs	\$	50,000
T-Line Move Construction Costs	\$	200,000
Sub-total	\$	752,278

Transmission Lead Line

Engineering/Permitting Costs	\$ 167,900
Construction Costs	\$ 1,653,130
Sub-total	\$ 1,821,030
Total	\$ 2,573,308

Note: This estimate is accurate to +/- 20% based on 2026 dollars

Estimated Lead Times:

Engineering	3 months
Procurement	8 months
Construction	3 months

Total length 14 months

Monte Vista 138 kV Substation (Non-shared NU) UID 170783

Non-shared Network Upgrades required to accommodate the interconnection of the Project at the Monte Vista 138 kV Switchyard include installing a new 138 kV breaker in the existing ring bus, installing two new disconnect switches, installing new lightning arrestors, installing new jumpers, and installing new revenue metering and relays.

Estimated Costs:

Monte Vista Substation (NSNU)

Design Costs	\$ 309,000
Construction Costs	\$ 856,190
Total	\$ 1,165,190

Note: This estimate is accurate to +/- 20% based on 2026 dollars

Estimated Lead Times:

Engineering	6 months
Procurement	12 months
Construction	4 months

Total length 22 months

Proposed Plan of Service

The Proposed Plan of Service discussed in this section of the report was developed to meet the requirements of the SPP Expedited Resource Adequacy Study (ERAS) process.

The POI for the Project will be at PEC's Monte Vista 138 kV Switchyard. PEC will install a new breaker and switches on the existing ring bus at the Monte Vista switchyard and construct a 138 kV transmission line from the POI to the Project site approximately 0.75 miles to the north.

The PEC-owned system relevant to the study area is shown below in **Figure 1** and a location map showing the general vicinity of the Project and the Monte Vista Switchyard is shown below in **Figure 2**.

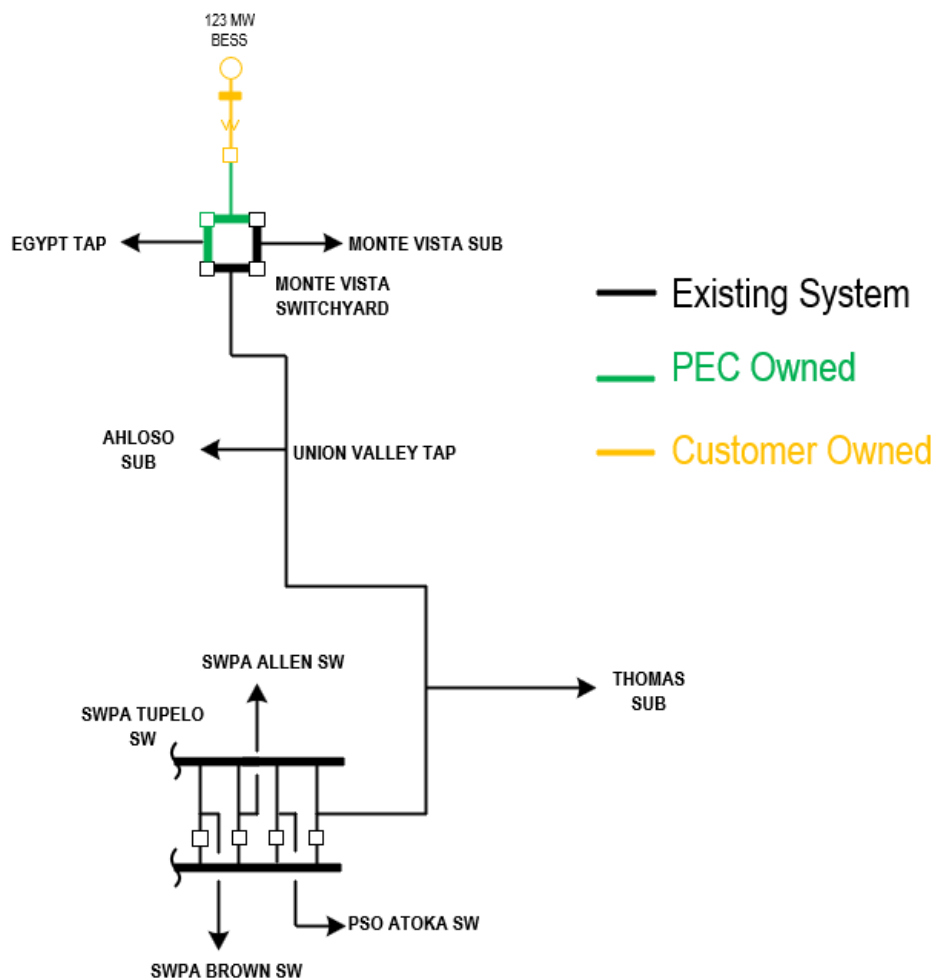


Figure 1: Proposed Plan of Service

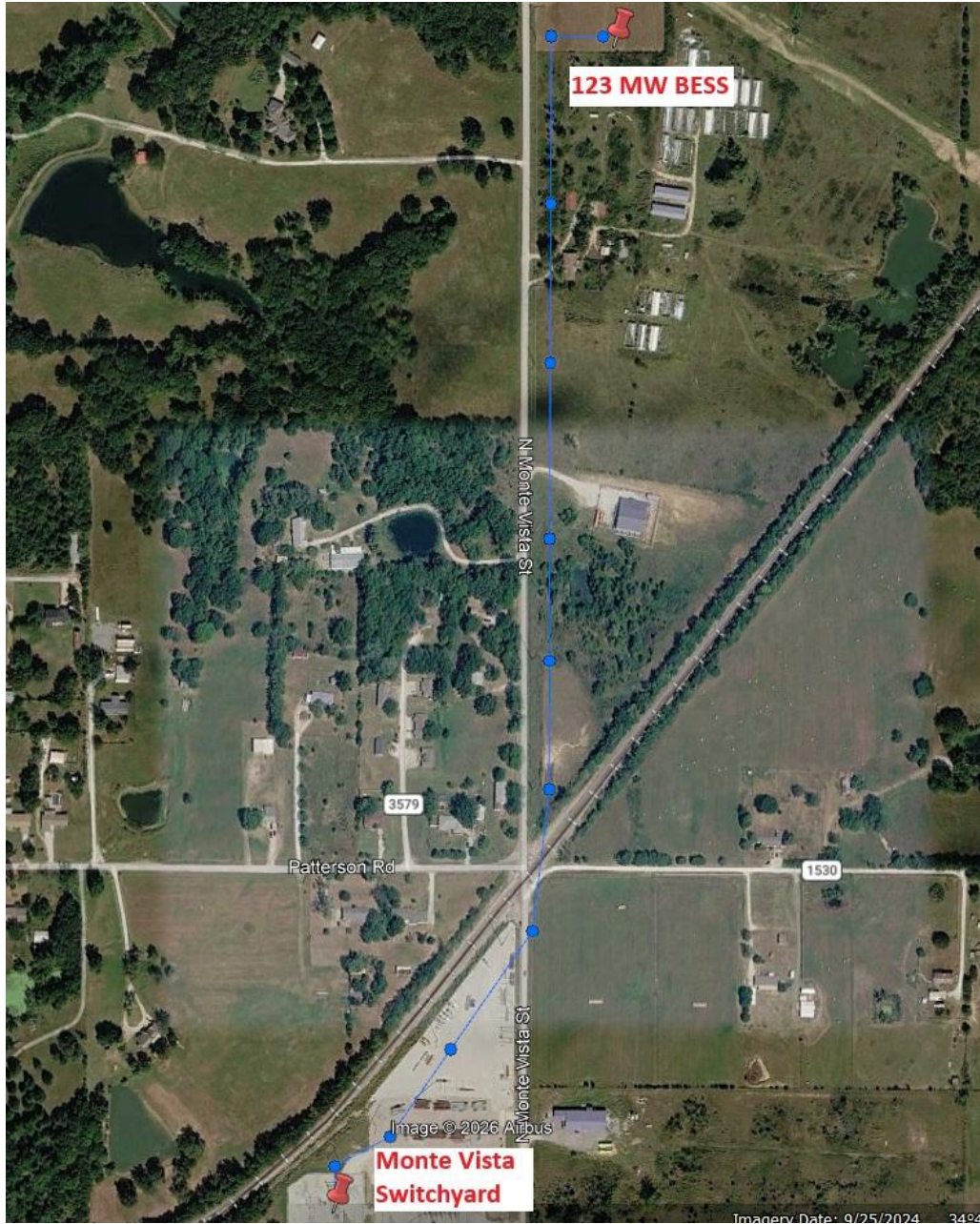


Figure 2: Location Map

Conclusion

The Proposed Plan of Service has a POI at the Monte Vista 138 kV switchyard and will have a 138 kV transmission lead line constructed approximately 0.75 miles north to the Project site.

The estimated cost of the Monte Vista 138 kV Switchyard TOIF upgrades (UID 170782) is \$2,573,308 with an estimated lead time of 14 months.

The estimated cost of the Monte Vista 138 kV Switchyard NSNU upgrades (UID 170783) is \$1,165,190 with an estimated lead time of 22 months.

There are many factors outside of the transmission owner's control potentially extending the time required for completing the Proposed Plan of Service outlined above. These factors include, but are not limited to: unexpected delays in the permitting process including environmental reviews, long lead times for obtaining electrical equipment, shortages of qualified workers, contractual negotiations with third parties, inclement weather conditions, or unforeseen permitting and environmental issues.